

Geometry Collection



DESIGN

Product Type:	Glue Down LVT
Gauge:	.20"(5mm)
Wear Layer:	20 mil (0.5mm)
Finish:	M-Force Enhanced Urethane
Size:	24" x 24" (609 mm x 609 mm)
Square Feet Per Carton:	16 sf/ctn (1.48 m2/ctn)
Pieces Per Carton:	4 pcs/ctn
Pounds per carton:	29.28 lbs/ctn (13.26 kg/ctn)
Installation Method:	Glue Down
Recommended Adhesive:	M95.0 Acrylic, MS160 Spray, M700 Pressure Sensitive Adhesive

PERFORMANCE

Construction:	Commercial Grade Enhanced Resilient Tile
Classification:	ASTM F1700 - Class III, Type A - Smooth, Type B - Embossed
Squareness:	ASTM F2055 - Passes - $\pm 0.10"$ max
Size and Tolerance:	ASTM F2055 - Passes - $\pm 0.16"/$ linear foot
Thickness:	ASTM F386 - Passes - as specified $\pm 0.005"$
Flexibility:	ASTM F137 - Passes - 1" mandrel
Dimensional Stability:	ASTM F2199 - Passes - 0.020"/linear foot max
Static Load:	ASTM F970 - Passes, modified at 1500 psi
Residual Indentation:	ASTM F1914 - Passes - Average less than 8%, maximum single reading 10%
Slip Resistant:	ASTM C1028 - Passes - Wet: ≥ 0.5
Resistance To Chemicals:	ASTM F925 - Passes - No more than a slight change in surface dulling, surface attack or staining
Resistance To Light:	ASTM F1515 - Passes - $\Delta E < 8$
Resistance To Heat:	ASTM F1514 - Passes - $\Delta E < 8$
Critical Radiant Flux:	ASTM E648 - Class 1(>0.45 W/cm2)
Smoke Density:	ASTM E662 Part A - Less than 450

SUSTAINABILITY

Certification:	FloorScore® certified
----------------	-----------------------



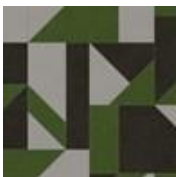
148
Third



379
Origami



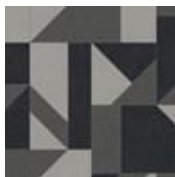
579
Angle



679
Prism



828
Factor



949
Segment