



DESIGN

Tufted Pile Weight:	17 oz/yd2 (576 g/m2)
Product Type:	Tile
Construction:	Tufted
Minimum Sq. Yd.:	No Minimum
Surface Texture:	Textured Patterned Multi-Colored Loop
Gauge:	1/12 (47.00 rows per 10 cm)
Density:	6,181
Weight Density:	105,077
Stitches Per Inch:	12.0 (47.24 per 10 cm)
Finished Pile Thickness:	.099" (2.51 mm)
Dye Method:	Solution Dyed
Backing Material:	EcoFlex Matrix
Fiber Type:	Colorstrand® SD Nylon
Pattern Repeat:	Not Applicable
Size:	24" x 24" (.6096 m x .6096 m)
Installation Method:	Vertical Ashlar, Quarter Turn, Multi Directional
Stain Release Technology:	Sentry Plus Stain Protection
Soil Release Technology:	Sentry Soil Protection
Foot Traffic Recommendation TARR:	Heavy

SUSTAINABILITY

IAQ Green Label Plus:	CRI Green Label Plus GLP1171
Pre-Consumer Recycled Content:	52%
NSF 140:	EcoFlex Matrix - NSF 140 Gold
Declare Label:	Declared Red List Free

PERFORMANCE

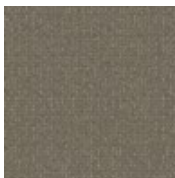
Static:	AATCC-134 Under 3.5 KV
Flammability:	ASTM E 648 Class 1 (Glue Down)
Smoke Density:	ASTM E 662 Less than 450

SERVICE

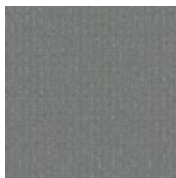
Warranties:	Lifetime Limited Carpet Tile Warranty, Lifetime Limited Colorfastness to Light, 10 Year Colorfastness to Atmospheric Contaminants, 10 Year Stain Warranty, Lifetime Static
-------------	---



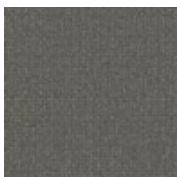
569
Cadet
Quickship Available



853
Fallow
Quickship Available



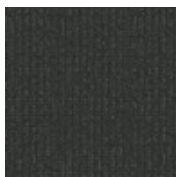
924
Platinum
Quickship Available



958
Ecrú
Quickship Available



959
Slate
Quickship Available



989
Charcoal
Quickship Available