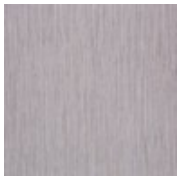


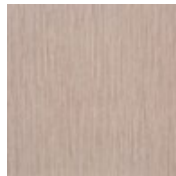
Active Tec Collection



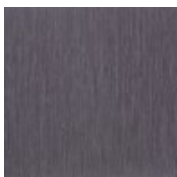
01
Warm Taupe



02
Light Grey



03
Beige



06
Dark Brown

DESIGN

Product Type:	Floating LVT
Overall Thickness:	4.5 mm (.18")
Wear Layer:	12 mil (0.3 mm)
Finish:	Enhanced Urethane
Size:	18"W x 18"L (actual)
Square Feet Per Carton:	22.5 sq ft/ctn (tile), 24.75 sq ft/ctn (underlay)
Pieces Per Carton:	12 (tile), 8 (underlay) pcs/ctn
Pounds per carton:	51.6 lbs/ctn
Installation Method:	Peel and Stick ERT with Floating Underlay
Recommended Adhesive:	None Required

PERFORMANCE

Construction:	Light Commercial Grade Enhanced Resilient Tile with underlay
Classification:	ASTM F-1700 - Class III, Type A - Smooth, Type B - Embossed
Squareness:	ASTM F2055 -10 Passes - maximum 0.010 in. (0.25mm)
Size and Tolerance:	ASTM F2055 - Passes - at ± 0.016 in./lin. Ft. (0.4 mm/305 mm)
Thickness:	ASTM F386 - Passes - as specified ± 0.005 in. (0.13 mm)
Flexibility:	ASTM F137 - Passes - 1" mandrel
Dimensional Stability:	ASTM F2199 - Passes - no greater than 0.020 in./lin. Ft. (0.51 mm/305 mm)
Static Load:	ASTM F970 - Passes - Exceeds 1000 psi
Residual Indentation:	ASTM F1914 - Passes - average less than 8%
Resistance To Chemicals:	ASTM F925 - Passes - exceeds
Resistance To Light:	ASTM F1515 - Passes - $\Delta E \leq 8.0$
Resistance To Heat:	ASTM F1514 - Passes - $\Delta E \leq 8.0$
Critical Radiant Flux:	ASTM E648 - Passes - ≥ 0.45 watts/cm ² , Class 1
Smoke Density:	ASTM E662 - Passes - < 450
Wear Resistance:	NALFA/ANSI LF-01 3.7 - IP $\geq 6,000$ cycles

SUSTAINABILITY

Certification:	FloorScore® certified
----------------	-----------------------

SERVICE

Warranties:	Limited 10 Year Commercial Warranty
-------------	-------------------------------------