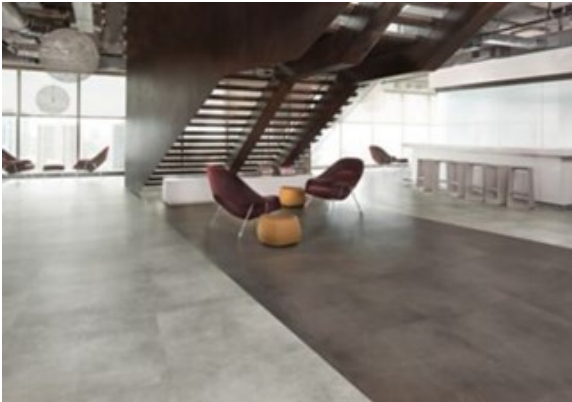


Hot and Heavy Collection



**DESIGN**

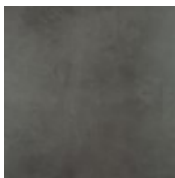
Product Type:	Floating LVT
Overall Thickness:	5 mm (.2")
Wear Layer:	20 mil (0.5 mm)
Finish:	M-Force Ultra
Surface Profile:	Light Emboss
Edge Profile:	Square
Size:	36"W x 36"L (actual)
Square Feet Per Carton:	36 sf/ctn (3.34 m <sup>2</sup> /ctn)
Pieces Per Carton:	4 pieces/ctn
Pounds per carton:	63.48 lbs/ctn (28.79 kg/ctn)
Installation Method:	Loose Lay with Perimeter Glue or Full Spread
Recommended Adhesive:	M95.0 Resilient Flooring Adhesive, M99 Resilient Flooring Adhesive, or M700 Adhesive

**PERFORMANCE**

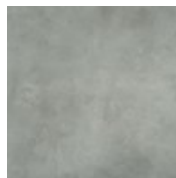
Construction:	Commercial Grade Loose Lay Enhanced Resilient Tile
Classification:	ASTM F1700 - Class III, Type A - Smooth, Type B - Embossed
Squareness:	ASTM 2421/ASTM F2055 - Passes - ±0.10 in. max
Size and Tolerance:	ASTM 2421/ASTM F2055 - Passes - ±0.016 in. per linear foot
Thickness:	ASTM F386 - Passes - as specified ±0.005 in.
Flexibility:	ASTM F137 - Passes - 1" mandrel
Dimensional Stability:	ASTM F2199 - Passes - 0.020 in. per linear foot
Static Load:	ASTM F970 - Passes, modified - 1000 psi
Residual Indentation:	ASTM F1914 - Passes - Average less than 8%, maximum single read 10%
Resistance To Chemicals:	ASTM F925 - Passes - No Change or Slight Change
Resistance To Light:	ASTM F1515 - Passes - ΔE ≤ 8
Resistance To Heat:	ASTM F1514 - Passes - ΔE ≤ 8
Critical Radiant Flux:	ASTM E648 - Passes - ≥ 0.45 watts/cm <sup>2</sup> , Class 1
Smoke Density:	ASTME662 - Part A - less than 450



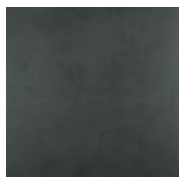
832  
River Rock



888  
Schist



925  
Pebble



999  
Onyx

**SUSTAINABILITY**

Certification:	FloorScore® certified
Pre Consumer RC:	37%
Post Consumer RC:	22%

**SERVICE**

Warranties:	Limited 10 Year Commercial
-------------	----------------------------